

CertainTeed

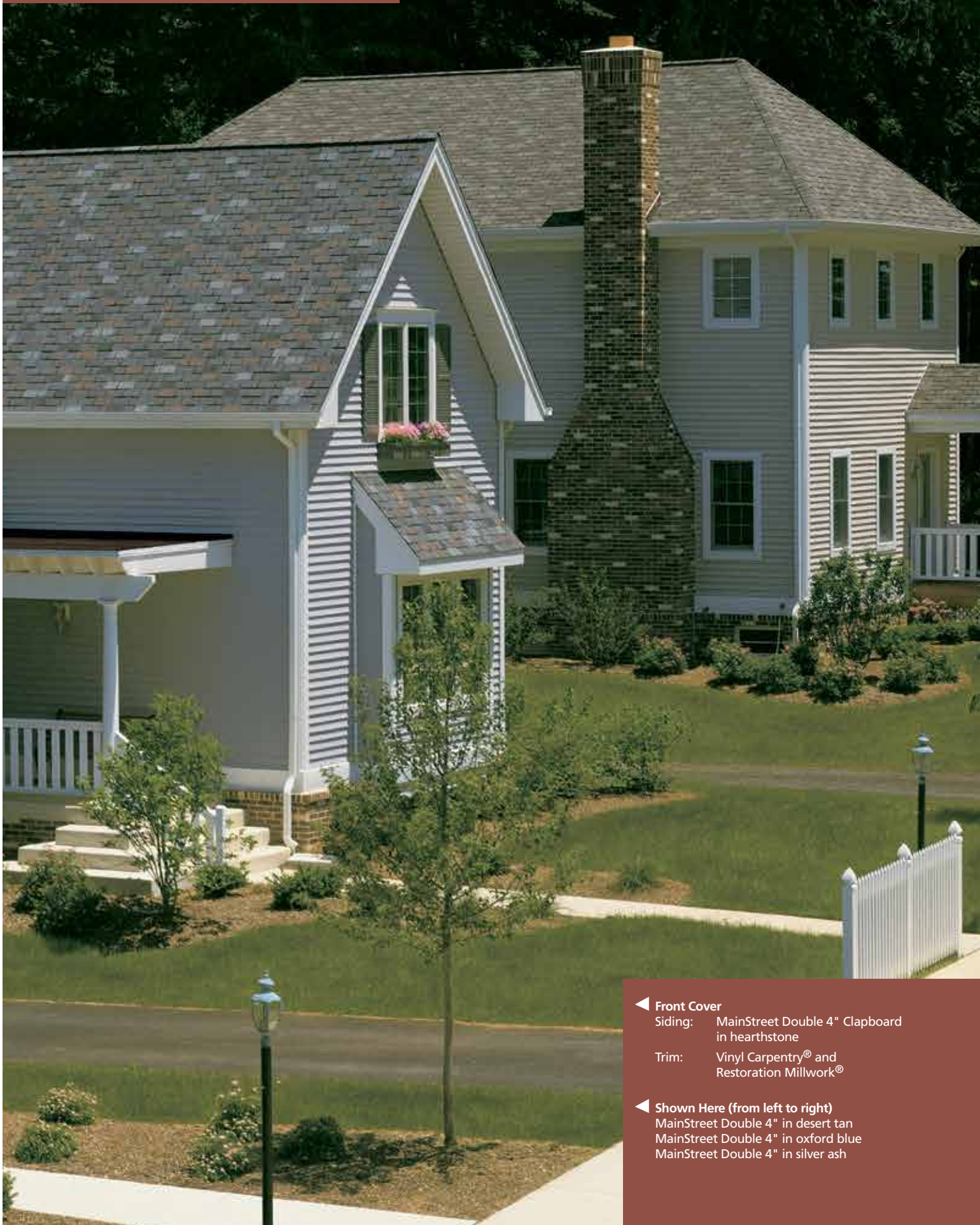
# MAINSTREET™

Siding



**CertainTeed**  
SAINT-GOBAIN

# MAINSTREET™



## ◀ Front Cover

Siding: MainStreet Double 4" Clapboard  
in hearthstone

Trim: Vinyl Carpentry® and  
Restoration Millwork®

## ◀ Shown Here (from left to right)

MainStreet Double 4" in desert tan  
MainStreet Double 4" in oxford blue  
MainStreet Double 4" in silver ash

MainStreet™ siding offers consistent quality, good looks and is the ideal choice for homeowners looking for value with the benefits of a premium panel.

**FEATURE-RICH SIDING  
WITH FLEXIBILITY  
TO MEET ANY BUDGET**

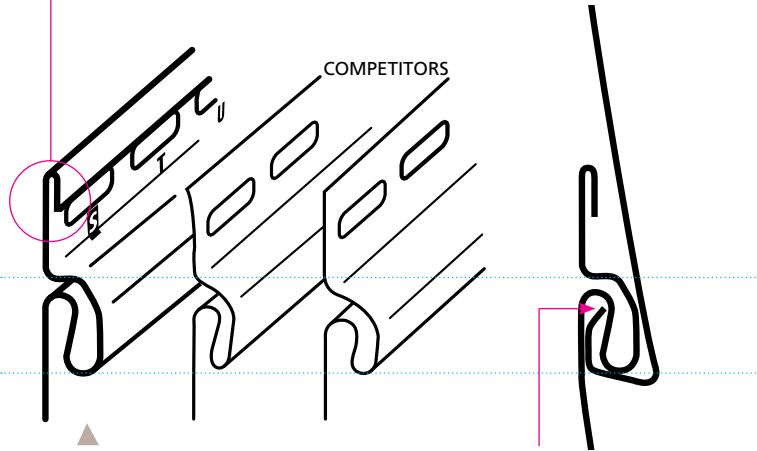


# FEATURES

## RigidForm™ Technology

RigidForm 160 (rolled-over nail hem) technology stiffens siding for a straighter-on-the-wall appearance and has been tested\* to withstand wind load pressures up to 160 mph.

\* Wind load rating per VSI wind speed calculation guidelines.



**DuraLock®** features an oversized rigid tear-drop shape which is substantially larger than many competitors' locks, providing secure installation.

The angular locking leg creates a secure, snap-fit installation, allowing for necessary expansion and contraction.

## 7 Product Styles, 24 Colors and 2 Finishes

Triple 3" Brushed Clapboard in desert tan

Double 4" Woodgrain Clapboard in cypress

Double 5" Woodgrain Clapboard in silver ash

Double 4" Woodgrain Dutchlap in snow



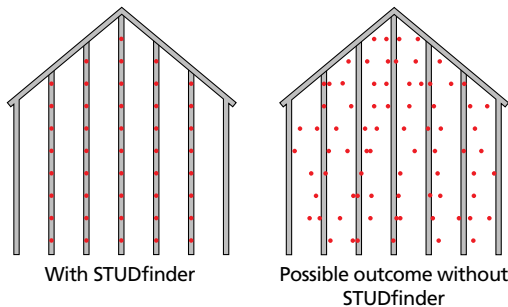
## The STUDfinder™ Installation System

STUDfinder combines precisely spaced nail slots with indicator letters, designed for accurate and secure installation.



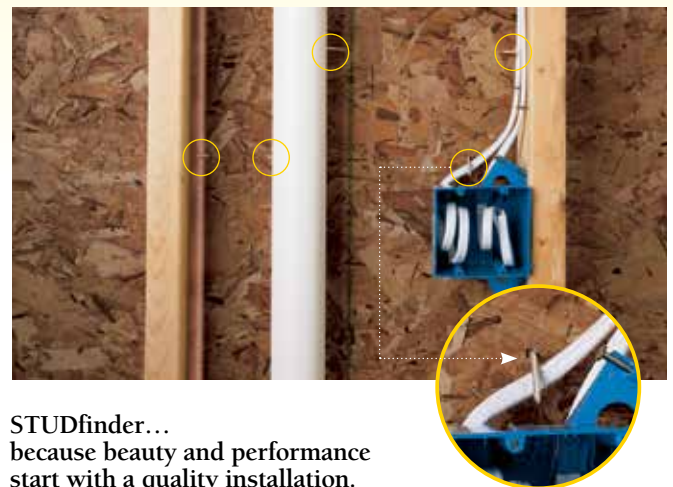
### STUDfinder for Accuracy

- Nail slots align with 16" on-center standards for stud spacing.
- Indicator letters help:
  - Determine location of studs
  - Ensure nails are positioned correctly
  - Ensure correct number of nails are used

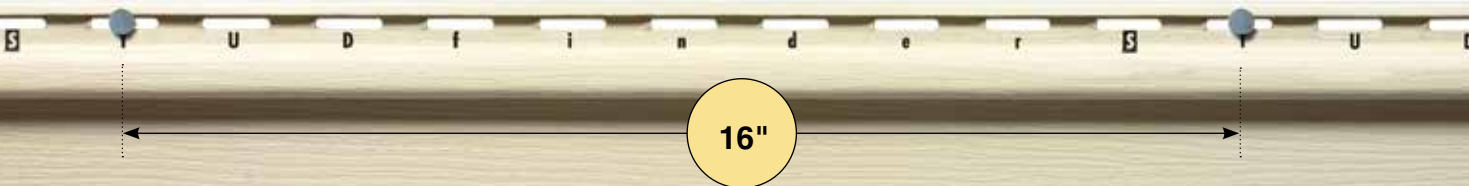


## STUDfinder for Security and Performance

- Nailing to studs provides a strong and secure connection.
- Protects against blow offs from under nailing.
- Protects against buckling from over nailing.
- Helps avoid nailing into hazardous items between studs like plumbing or wiring.



STUDfinder... because beauty and performance start with a quality installation.



Double 5" Woodgrain Dutchlap in natural clay  
 Single 8" Woodgrain Clapboard in colonial white  
 Single 6-1/2" Brushed Beaded in oxford blue



FAST FACTS	
LOW GLOSS COLORS	Up to 24 Low-Gloss Colors with Coordinating Trim Colors Color-Clear-Through Construction
STYLES AND FINISHES	Double 4" Woodgrain Clapboard Triple 3" Brushed Clapboard Double 5" Woodgrain Clapboard Double 4" Woodgrain Dutchlap Double 5" Woodgrain Dutchlap Single 8" Woodgrain Clapboard Single 6-1/2" Brushed Beaded
THICKNESS	.042" Nominal
NAIL HEM AND LOCK	STUDfinder™ Installation System RigidForm™ 160 Nail Hem Technology and DuraLock® Post-Formed Lock
PANEL PROJECTION	1/2"
FIRE RATING	Class 1(A)
WARRANTY	Lifetime Limited with PermaColor™ Lifetime Fade Protection



Color performance, impact resistance and durability are assured through our exclusive PermaColor™ System, a blend of our own Certavin™ resin, superior micro-ingredients and state-of-the-art pigment chemistry.



Start exploring preset color combinations and create your own custom exterior with on-line, interactive tools, designed to help you "Visualize Your Home".  
 Start now at [certainteed.com/colortools](http://certainteed.com/colortools)



NOTE: Colors throughout this brochure are simulated. Consult product samples before making final selection.

\* DELUXE COLOR

	Double 4" Clapboard (woodgrain)	Triple 3" Clapboard (brushed)	Double 5" Clapboard (woodgrain)	Double 4" Dutchlap (woodgrain)	Double 5" Dutchlap (woodgrain)	Single 6-1/2" Beaded (brushed)	Single 8" Clapboard (woodgrain)
Forest*	●	●	●	●	●	●	●
Autumn Red*	●	●	●	●	●	●	●
Hearthstone*	●	●	●	●	●	●	●
Spruce*	●	●	●	●	●	●	●
Charcoal Gray*	●	●	●	●	●	●	●
Flagstone*	●	●	●	●	●	●	●
Granite Gray	●	●	●	●	●	●	●
Oxford Blue	●	●	●	●	●	●	●
Cypress	●	●	●	●	●	●	●
Buckskin	●	●	●	●	●	●	●
Natural Clay	●	●	●	●	●	●	●
Suede	●	●	●	●	●	●	●
Seagrass	●	●	●	●	●	●	●
Savannah Wicker	●	●	●	●	●	●	●
Sterling Gray	●	●	●	●	●	●	●
Sandpiper	●	●	●	●	●	●	●
Light Maple	●	●	●	●	●	●	●
Desert Tan	●	●	●	●	●	●	●
Silver Ash	●	●	●	●	●	●	●
Heritage Cream	●	●	●	●	●	●	●
Autumn Yellow	●	●	●	●	●	●	●
Sandstone Beige	●	●	●	●	●	●	●
Snow	●	●	●	●	●	●	●
Colonial White	●	●	●	●	●	●	●



**CertainTeed products are designed to work together and complement each other in color and style to give your home a beautiful finished look.**



Polymer Shakes & Shingles



Fiber Cement Siding



Fence



Insulated Siding



PVC Exterior Trim & Beadboard



Decking and Railing



Vinyl Siding



Vinyl Carpentry® Trim



Housewrap



**Professional:** [facebook.com/CertainTeedFreedomofChoice](https://www.facebook.com/CertainTeedFreedomofChoice)  
**Consumer:** [facebook.com/CertainTeedLivingSpaces](https://www.facebook.com/CertainTeedLivingSpaces)

**[ Be Certain ]** Confidence worth building on.™

**ASK ABOUT OUR OTHER CERTAINTEED® PRODUCTS AND SYSTEMS:**

ROOFING • SIDING • TRIM • DECKING • RAILING • FENCE • FOUNDATIONS  
 GYPSUM • CEILINGS • INSULATION • PIPE

[www.certainteed.com](http://www.certainteed.com) <http://blog.certainteed.com>

CertainTeed Corporation  
 P.O. Box 860  
 Valley Forge, PA 19482

**Professional:** 800-233-8990  
**Consumer:** 800-782-8777

© 4/13 CertainTeed Corporation, Printed in U.S.A.  
 Code No. CTS130

